

Seasonal management month by month

A year doing all the things.....

Presented by:
Liz Jones of
HappBee Acres



Bees are unpredictable and ever changing! This can change how your year progresses!

External

Seasons vary in length

Drought

Rainy

Late frost



Beekeeper in the Middle!

Internal

Bad Queens

Robbing

Brood diseases

Swarms

March

- The first month of the beekeepers calendar in Ohio

- Checking for colony weight, lifting colony from behind
- Checking colony size when lifting lid
- Feeding fondant / sugar bricks / syrup / pollen patty as needed
- Checking for burr comb in extra spaces, putting honey supers on if necessary



April

- Feed syrup, pollen patty
- Add supers
- Do hive inspections once temps are above 70

Varroa mite check for spring treatment

Check for swarm cells, do splits

Install packages



May

- Feed colonies that need it
- Continue checking for swarm cells
- Watch for swarms to collect
- Prepare soil for hive beetles (we use bagged rock salt)
- Install Nucs if purchased



June



- Continue to add supers as necessary
- Feed 1st year colonies, splits, swarms, struggling hives

July

- Extract honey
- Mite sampling and treatment



August



- Requeen if Needed
- Monitor Varroa Mites
- Honey Supers for Fall Flow

September

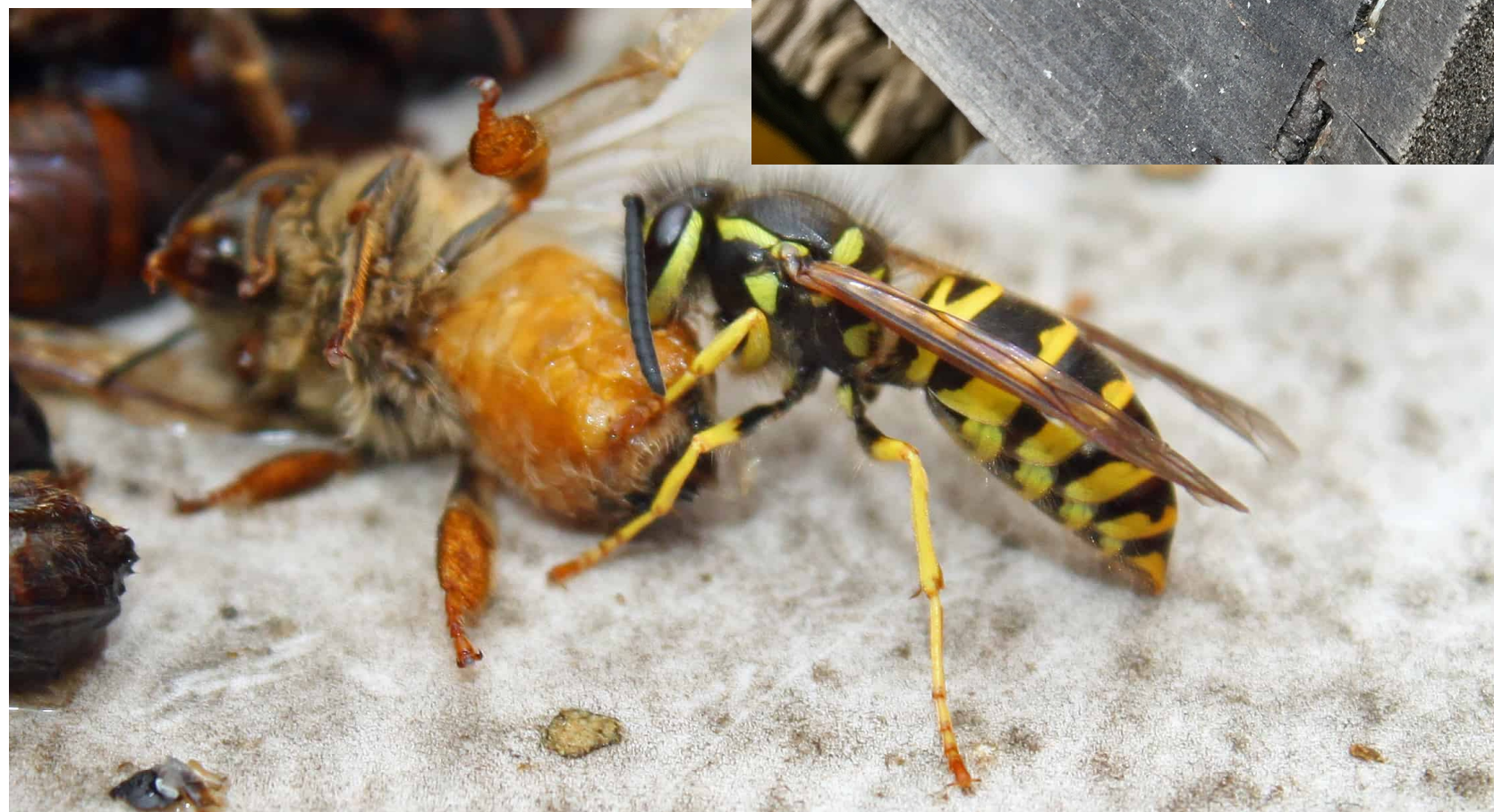
- Mite Wash
- Treatment if necessary
- Harvest fall end of month
- Begin feeding colonies that need it
- Combine Weak Hives



October



- Feed until daytime temps fall below 50
- Watch for Yellow Jackets and Robbers
- Add mouse guards, insulation



November

- Add Winter Wrap
- Watch for Yellow Jackets and Robber Bees



December



- Add winter food
- Order bees if necessary
- Give away honey as gifts

January

- Check weights of hives on warm days
- Add winter food
- Oxalic Acid treatments



February



- Begin preparing spring equipment
- Check colony weights on warm days

Winter feed

Sign up for bee schools



Thank You

Questions?